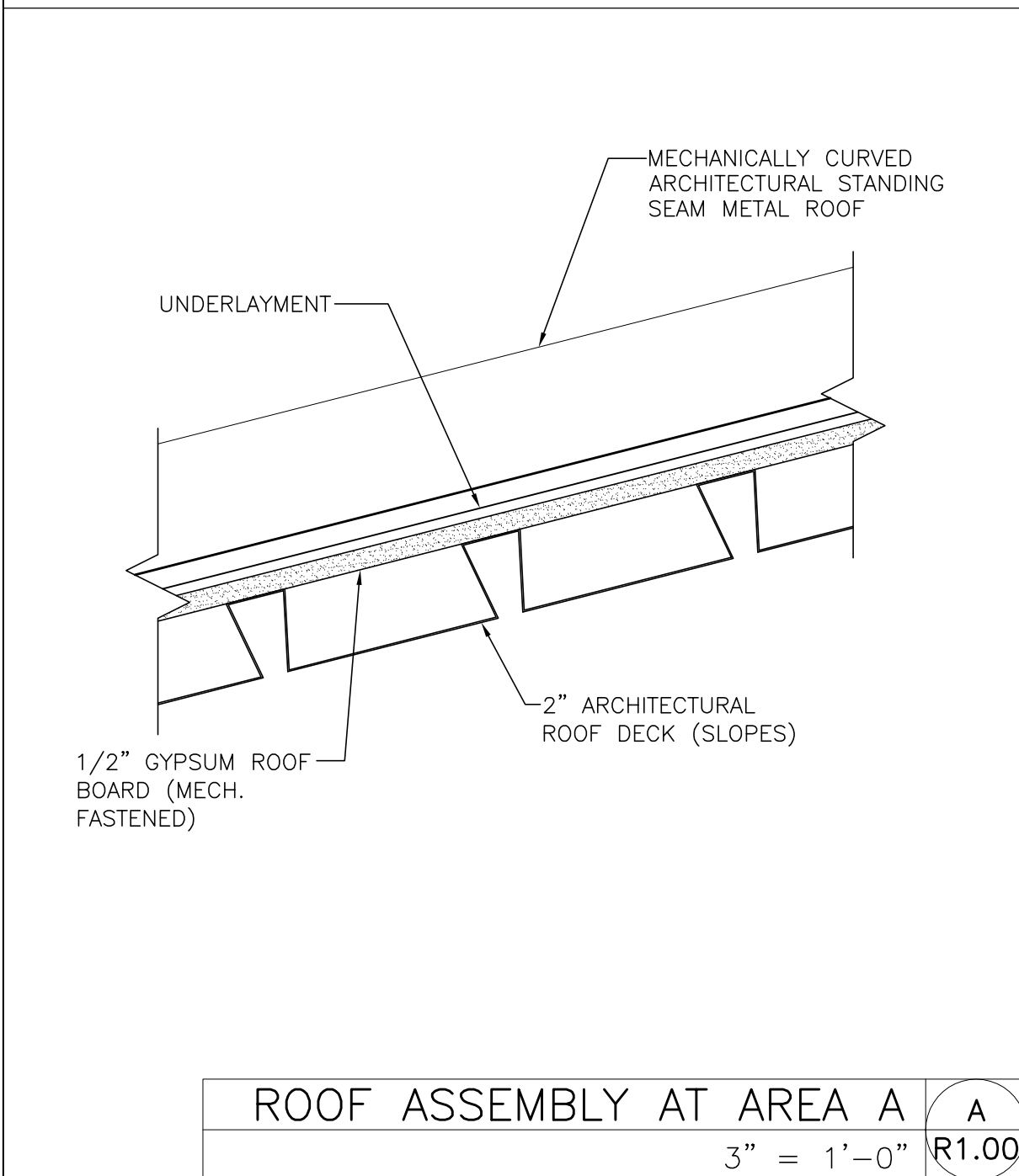


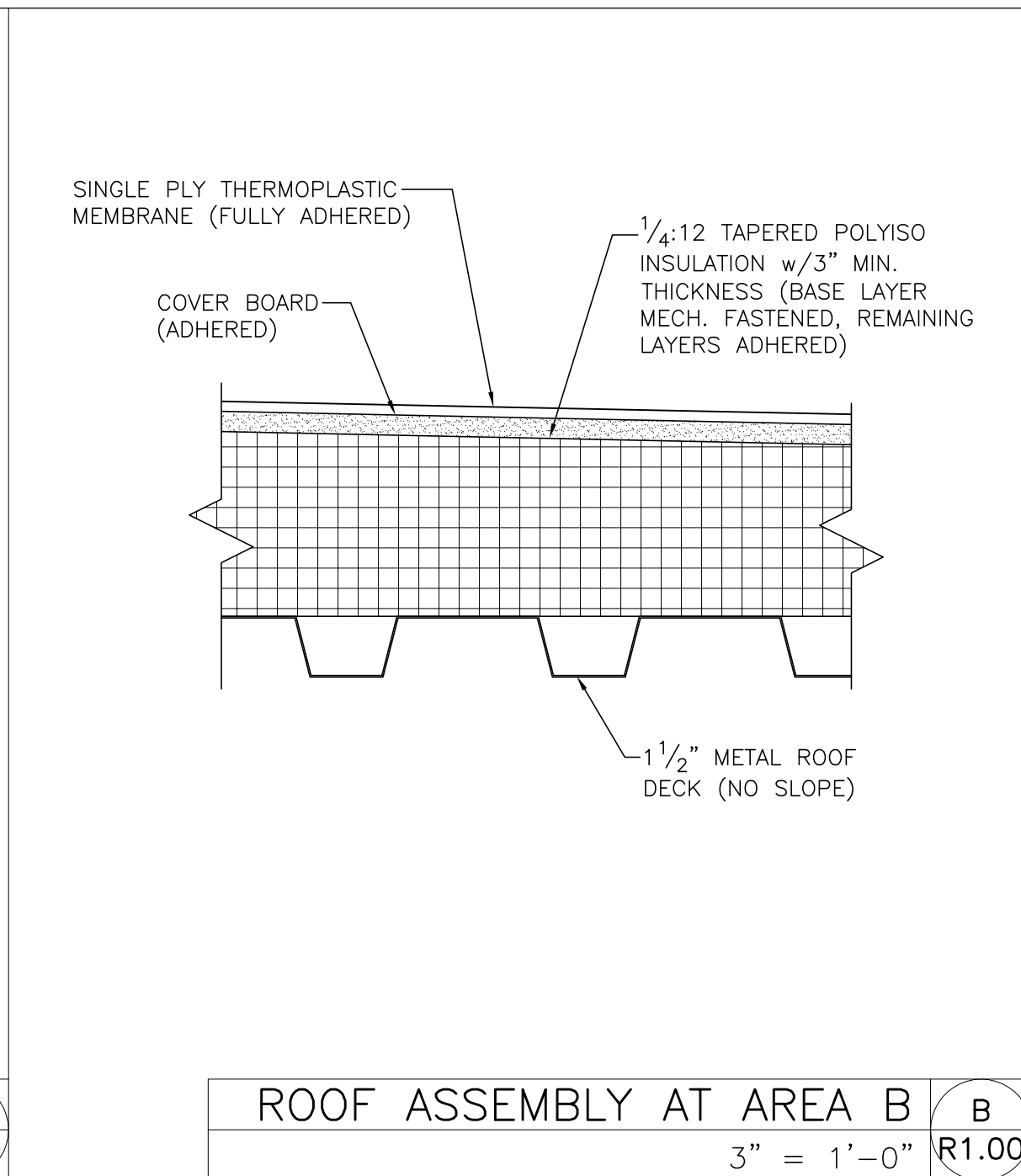
ROOF PLAN — OVERALL 1
1/16" = 1'-0" R1.00

NOTES 2
NO SCALE R1.00

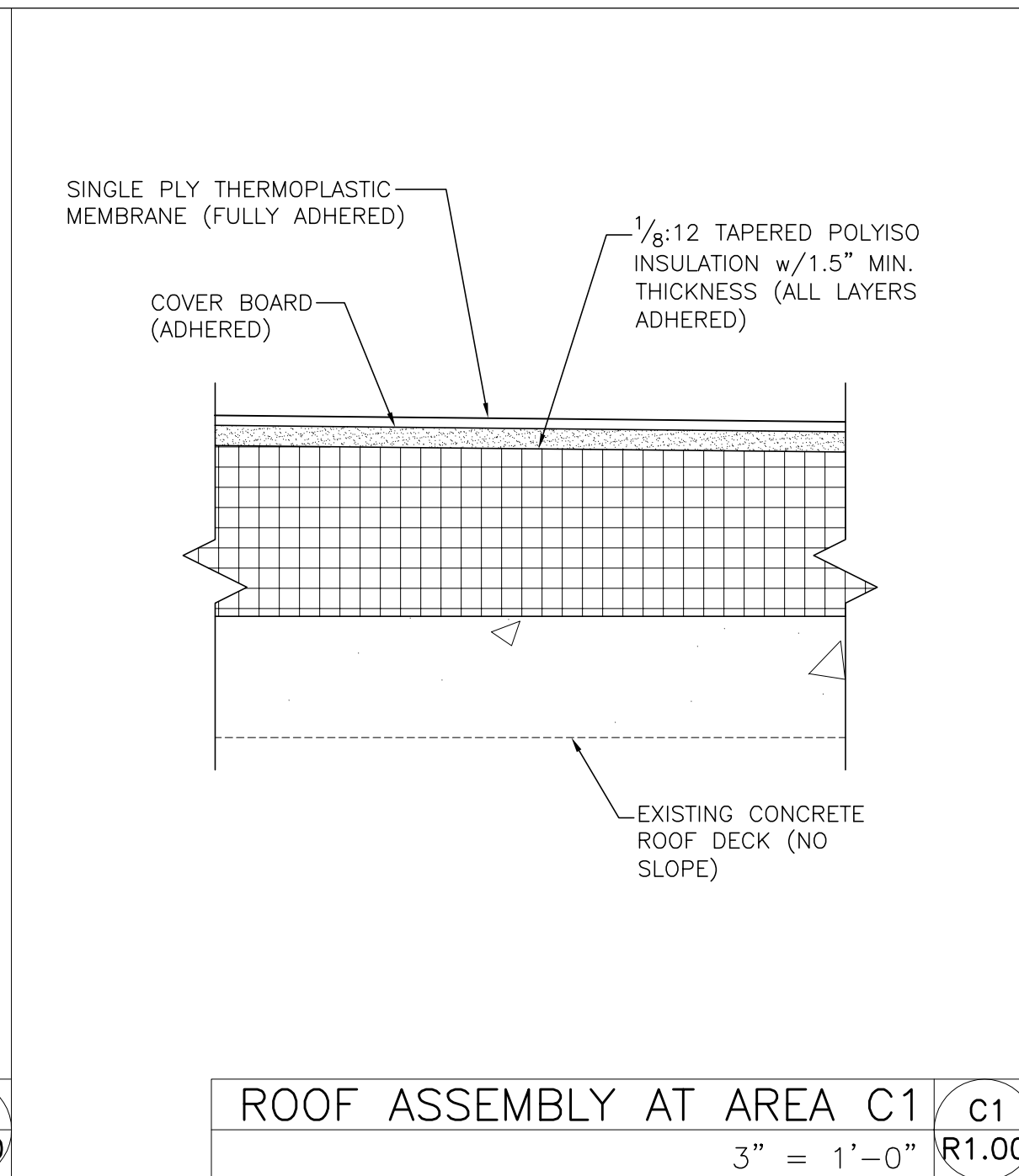
- A. GENERAL NOTES:**
1. BUILDING TO BE KEPT WATERTIGHT AND DRY AT ALL TIMES.
 2. EXISTING CONDITIONS ARE BASED ON VISUAL OBSERVATION ONLY. CONTRACTOR TO FIELD VERIFY EXISTING CONDITIONS.
 3. LAYOUT SHOWN ON THE DRAWINGS FOR NEW RIDGES, HIPS, VALLEYS & SADDLES IS FOR GENERAL REFERENCE ONLY. CONTRACTOR TO SUBMIT FINAL TAPERED INSULATION LAYOUT AND SHOP DRAWINGS FROM INSULATION SUPPLIER. SHOP DRAWINGS TO BE SUBMITTED TO ENGINEER AND OWNER FOR REVIEW BEFORE PLACING INSULATION ORDER AND BEFORE WORK BEGINS.
 4. DIMENSIONS FOR NEW SHEET METAL ARE TO BE FIELD VERIFIED BEFORE FABRICATION.
 5. FOLLOW RECOMMENDATIONS OF METAL ROOF PANEL MANUFACTURER, METAL BUILDING MANUFACTURERS ASSOCIATION, SINGLE-PLY MEMBRANE MANUFACTURER, SPRI, NRCA, SMACNA, AND INDUSTRY STANDARDS.
 6. ALL ROOF EDGING FLASHING SHALL COMPLY WITH SECTION 1504.5 OF THE NORTH CAROLINA BUILDING CODE AND BE TESTED FOR RESISTANCE IN ACCORDANCE WITH ANSI/SPRI ES-1.
 7. PROVIDE CRICKETS ON UP-SLOPE SIDE OF ALL ROOFTOP CURBS GREATER THAN 24" WIDE.
 8. ALL FASTENERS IN CONTACT WITH TREATED WOOD TO BE HOT DIP GALVANIZED OR STAINLESS STEEL.
 9. WORK AT EXISTING ROOFS TO BE COMPLETED SUCH THAT ANY EXISTING WARRANTIES ARE NOT VOIDED. ROOFER TO BE AN APPROVED APPLICATOR FOR VERSICO AND GARLAND.
- B. METAL ROOF PANEL NOTES:**
1. PROVIDE FIFTY WHERE SHOWN ON PLAN. PIN PANELS USING FIXED CLIPS IN LIEU OF EXPANSION CLIPS.
 2. EXPOSED FASTENERS ARE NOT PERMITTED. ALL FASTENERS TO ENGAGE TOP FLANGE OF METAL ROOF DECK.
 3. PROVIDE ANTI-CAPILLARY HEMS AT SEAMS.
 4. END LAPS IN PANELS ARE NOT PERMITTED.
 5. DO NOT FIX PANELS TO STRUCTURE AT PENETRATIONS.
 6. PROVIDE CRICKETS AT ALL PENETRATIONS GREATER THAN 6" WIDE.
 7. PENETRATIONS LESS THAN 11" WIDE SHALL NOT BE LOCATED AT SEAMS.



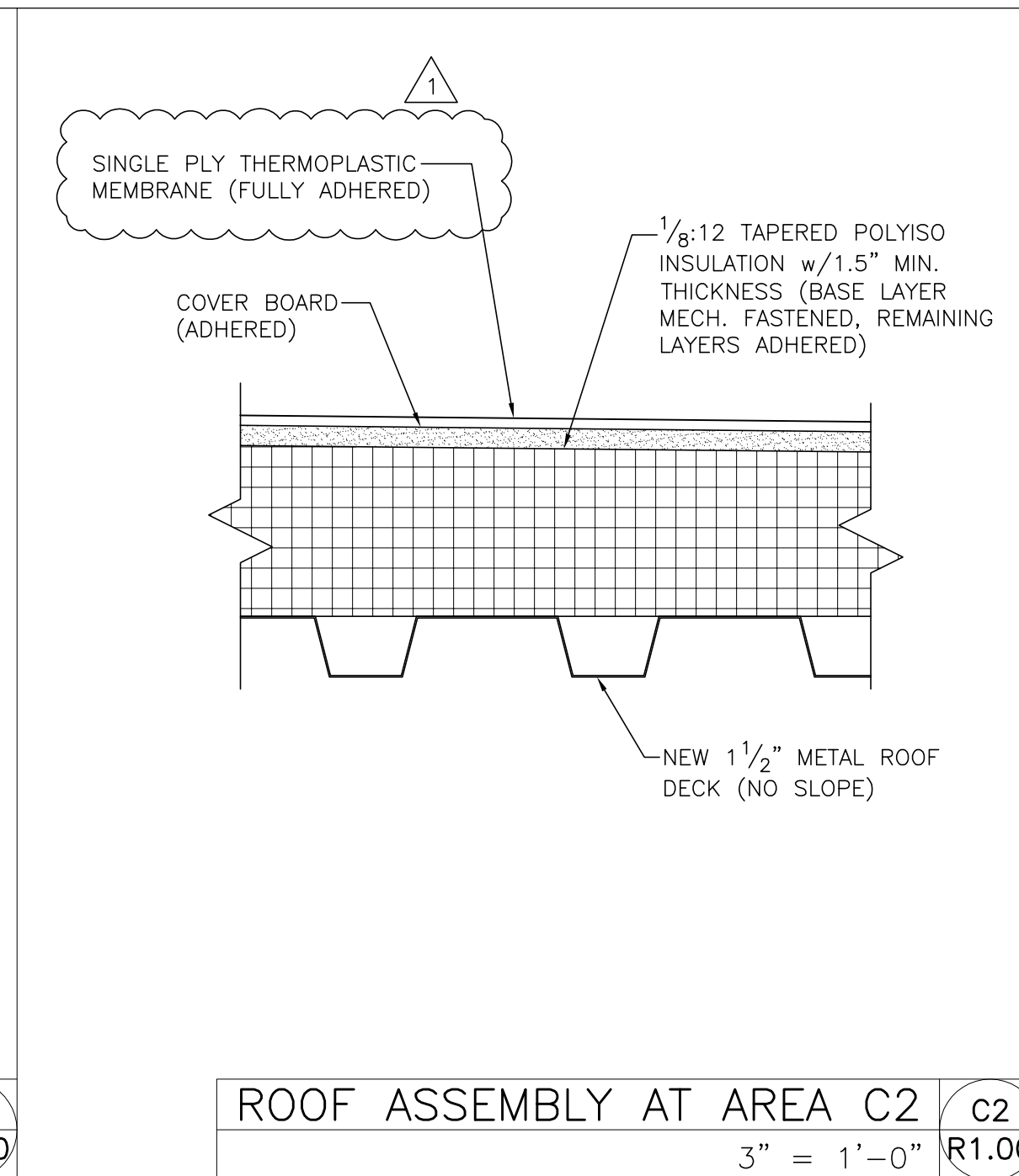
ROOF ASSEMBLY AT AREA A A
3" = 1'-0" R1.00



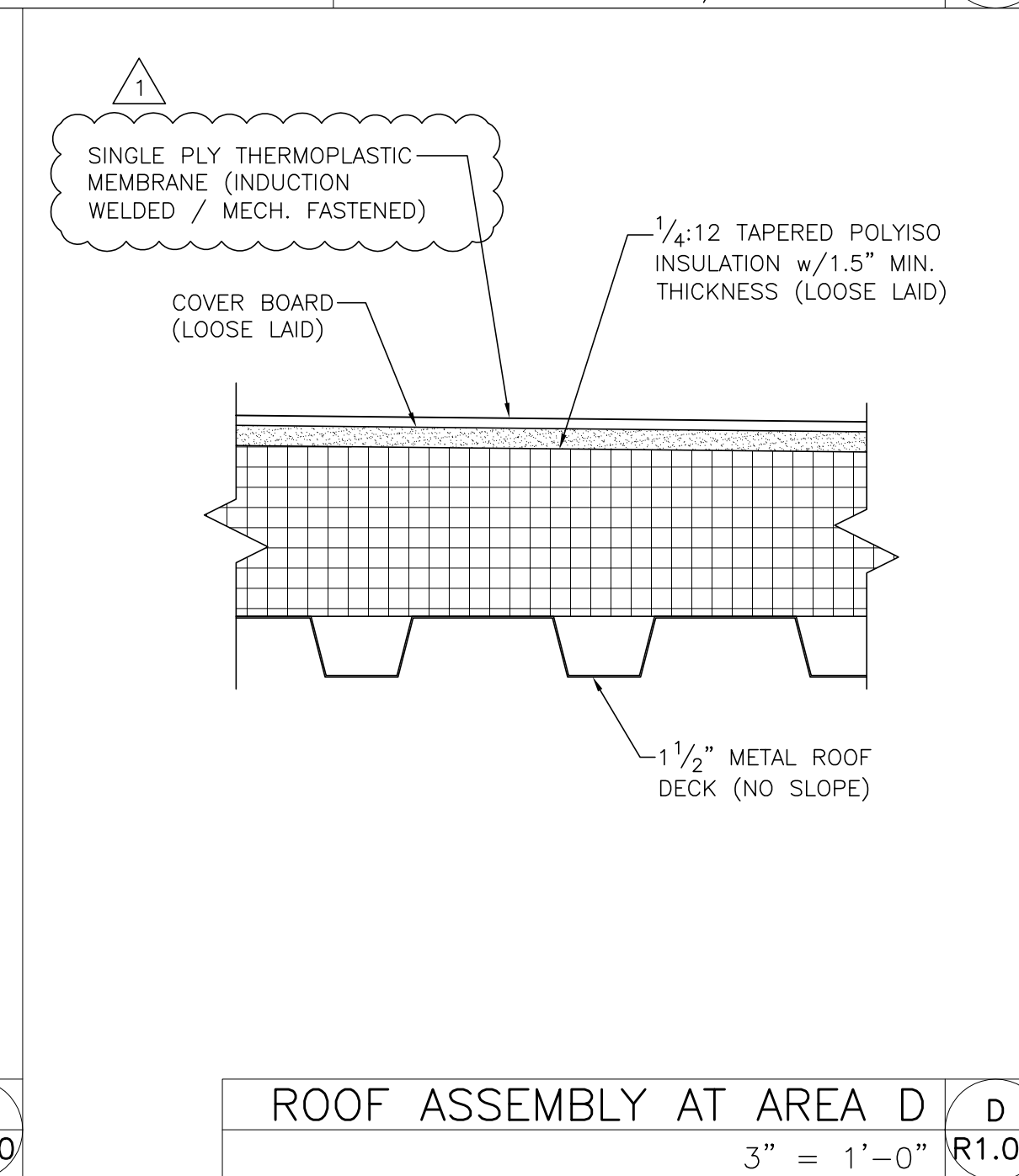
ROOF ASSEMBLY AT AREA B B
3" = 1'-0" R1.00



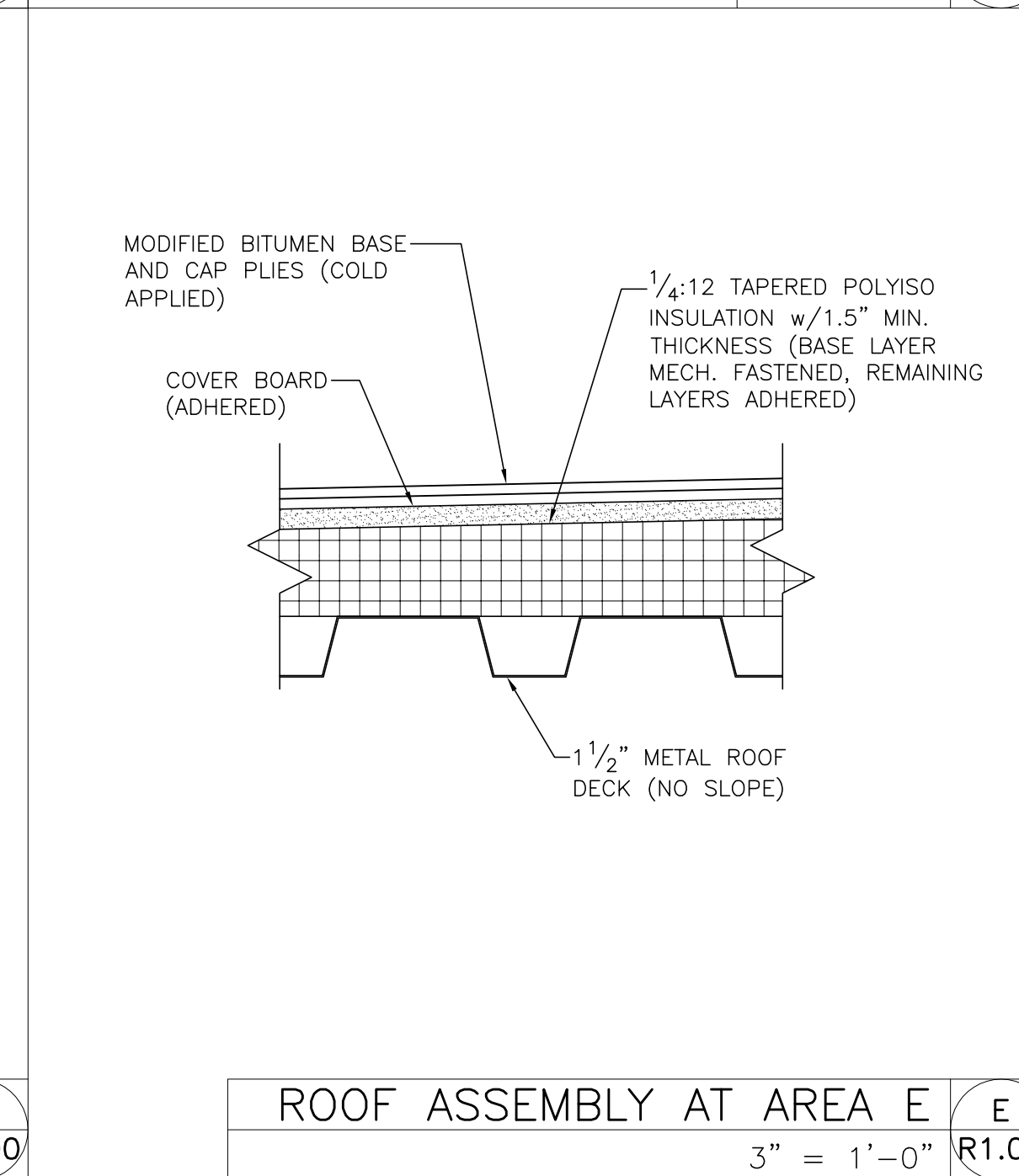
ROOF ASSEMBLY AT AREA C1 C1
3" = 1'-0" R1.00



ROOF ASSEMBLY AT AREA C2 C2
3" = 1'-0" R1.00



ROOF ASSEMBLY AT AREA D D
3" = 1'-0" R1.00



ROOF ASSEMBLY AT AREA E E
3" = 1'-0" R1.00

**GORDON
JOHNSON**
Architecture

454 May Street, Suite 4
Fayetteville, NC 28306
Phone: (910) 223-2806
Fax: (910) 223-2806
gordonjohnsonarchitecture.com
© Copyright 2019
Gordon E. Johnson, AIA
Reproduction or publication of this document is not permitted without the expressed consent of the author.

Legal Disclaimer:
This document is intended to comply with the requirements of the American Institute of Architects (AIA) and the International Building Code (IBC). It is not a contract and does not constitute a warranty. The user acknowledges that the user is not a professional and that the user is not a member of the AIA. The user agrees to indemnify and hold the AIA harmless from all claims, damages, and expenses, including reasonable attorneys' fees, arising out of or from the use of this document.

**FLEMING
& ASSOCIATES, P.A.**

1004 HWY 101, SUITE 200
FAYETTEVILLE, NC 28306
TEL: 910-433-2805
FAX: 910-433-2804
www.flemingandassociates.com

FAYETTEVILLE REGIONAL AIRPORT - Airline Terminal Improvements Part 2

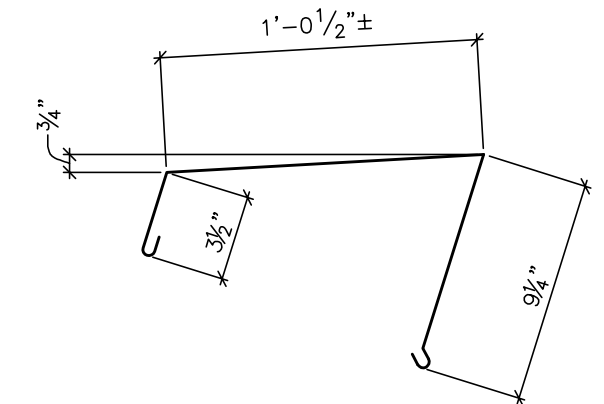
OVERALL ROOF PLAN, ROOF ASSEMBLY
DETAILS AND NOTES

DRAWN BY: DBT
REVIEWED BY: SE
DATE: 1-22-19
PROJECT NO.: 1515

REVISIONS
1. 7-24-19 ADDENDUM #1
2.
3.

SHEET NUMBER
R1.00

#19-59



ALUM. PARAPET CAP w/ KYNAR FINISH—
PROVIDE 6" COVER PLATE AT SPLICES PER
SMACNA MANUAL— PROVIDE SEALANT AT
JOINTS BETWEEN COVER PLATE AND
CONTINUOUS PARAPET CAP

MEMBRANE FLASHING— EXTEND
OVER TOP OF PARAPET AND
LAP NAILER EDGE BY 1" MIN.

1/2" GYPSUM BOARD SHEATHING

SINGLE PLY MEMBRANE

CONT. PARAPET
CAP SUPPORT

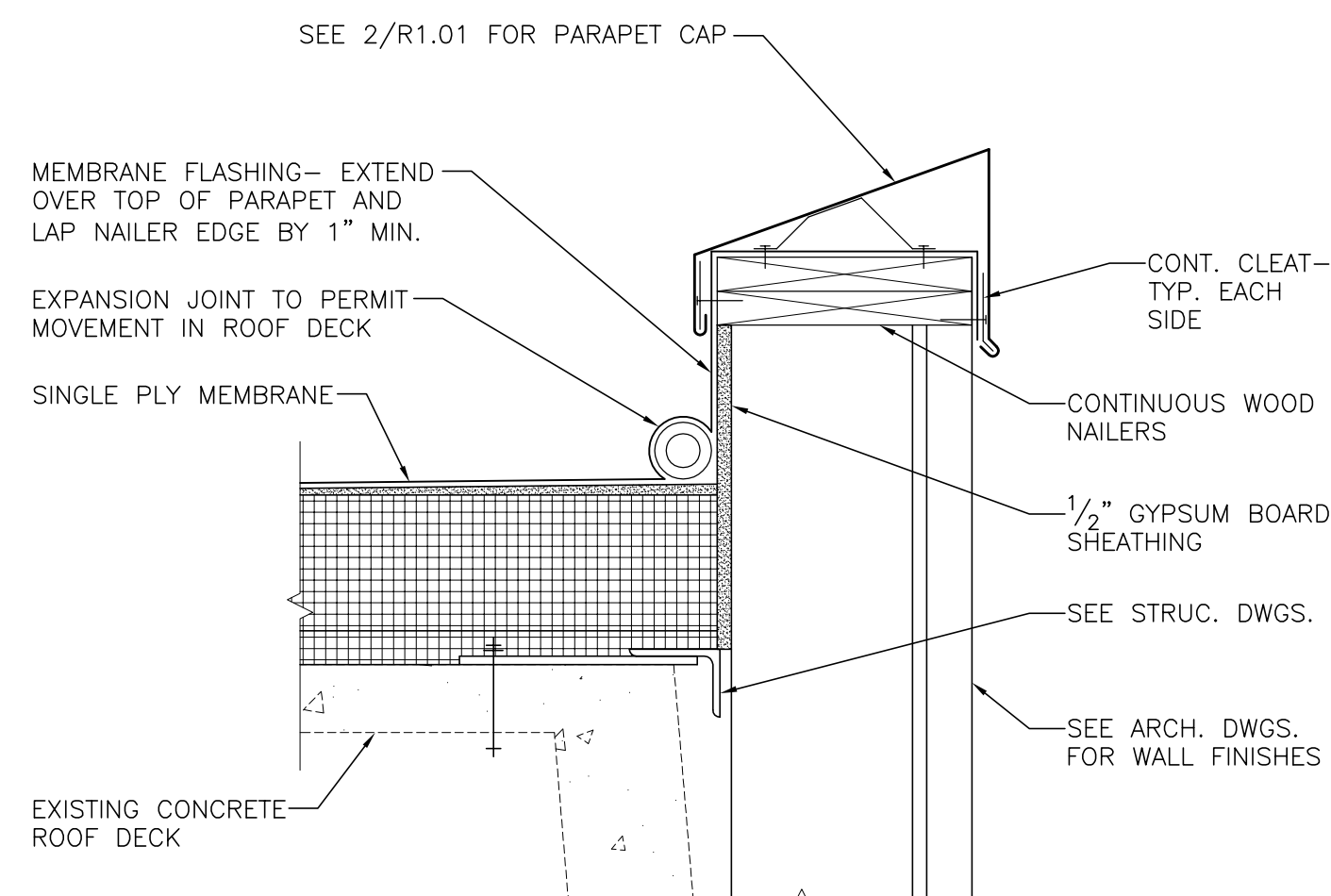
CONT. CLEAT—
TYP. EACH
SIDE

SEE STRUC. DWGS. FOR
STRUCTURAL STEEL

SEE ARCH. DWGS.
FOR WALL FINISHES

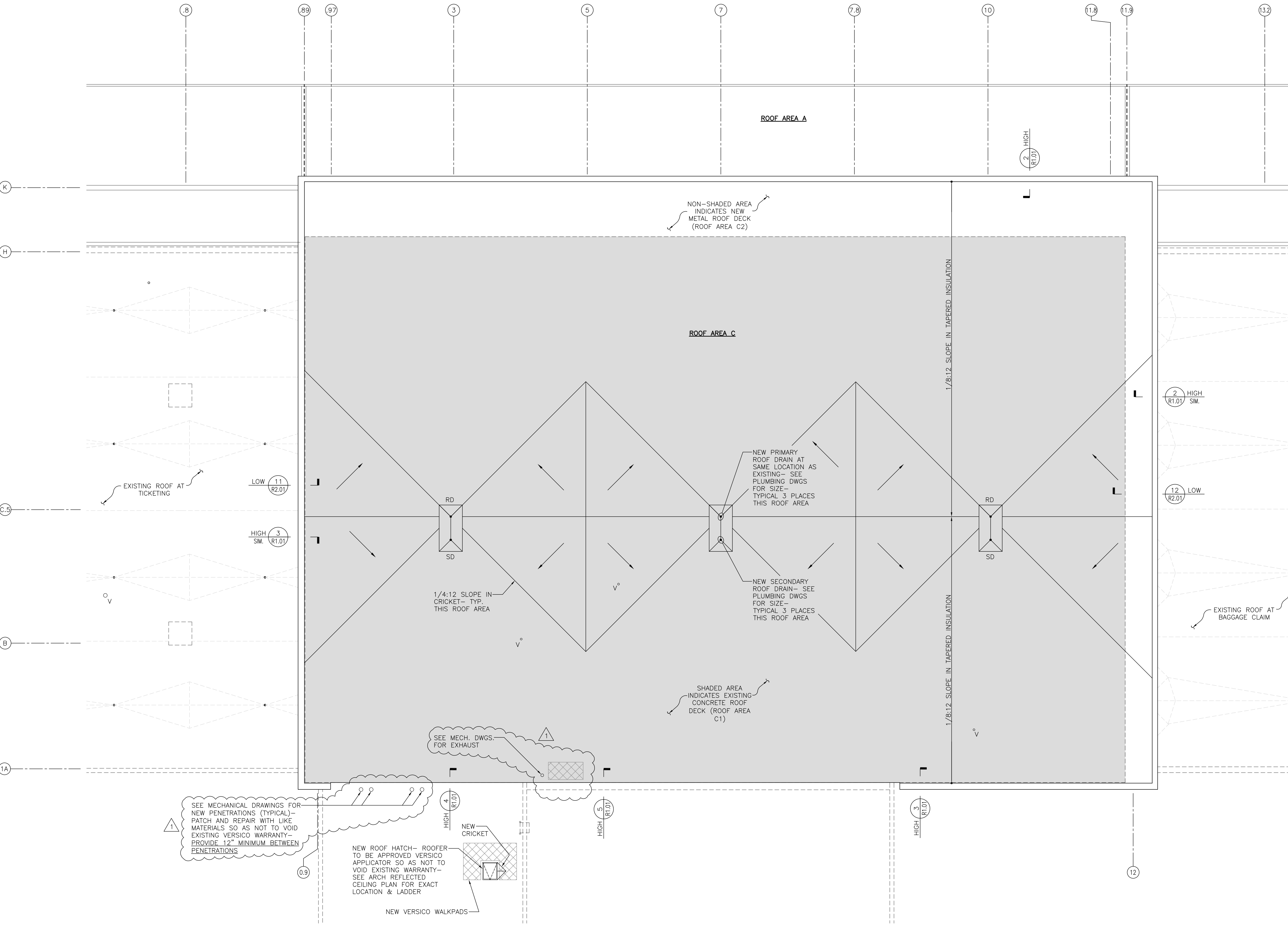
NEW METAL ROOF DECK

SECTION AT PARAPET 2
1-1/2" = 1'-0" R1.01



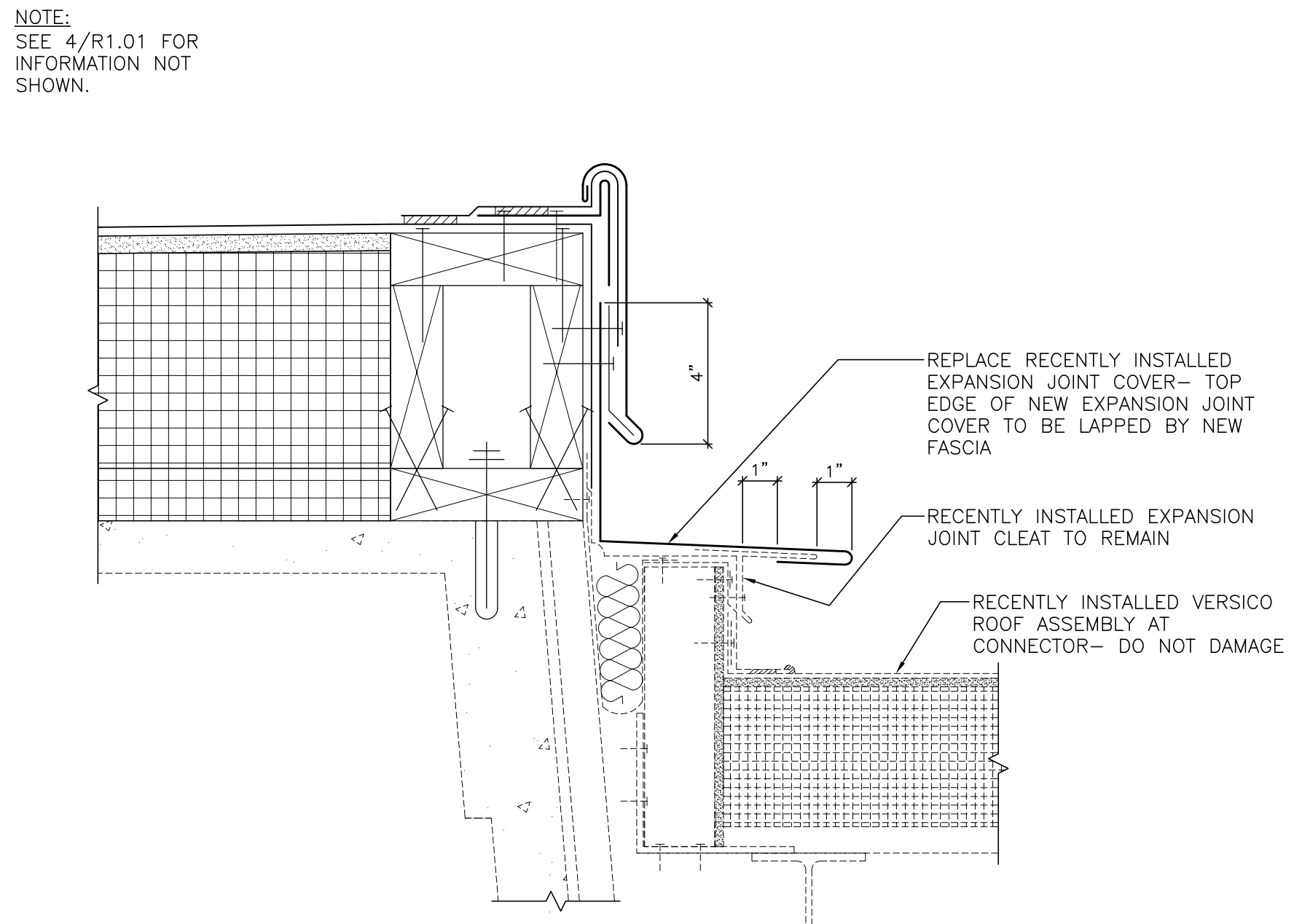
SECTION AT PARAPET 3
1-1/2" = 1'-0" R1.01

ROOF PLAN - MAIN TERMINAL 1
1/8" = 1'-0" R1.01

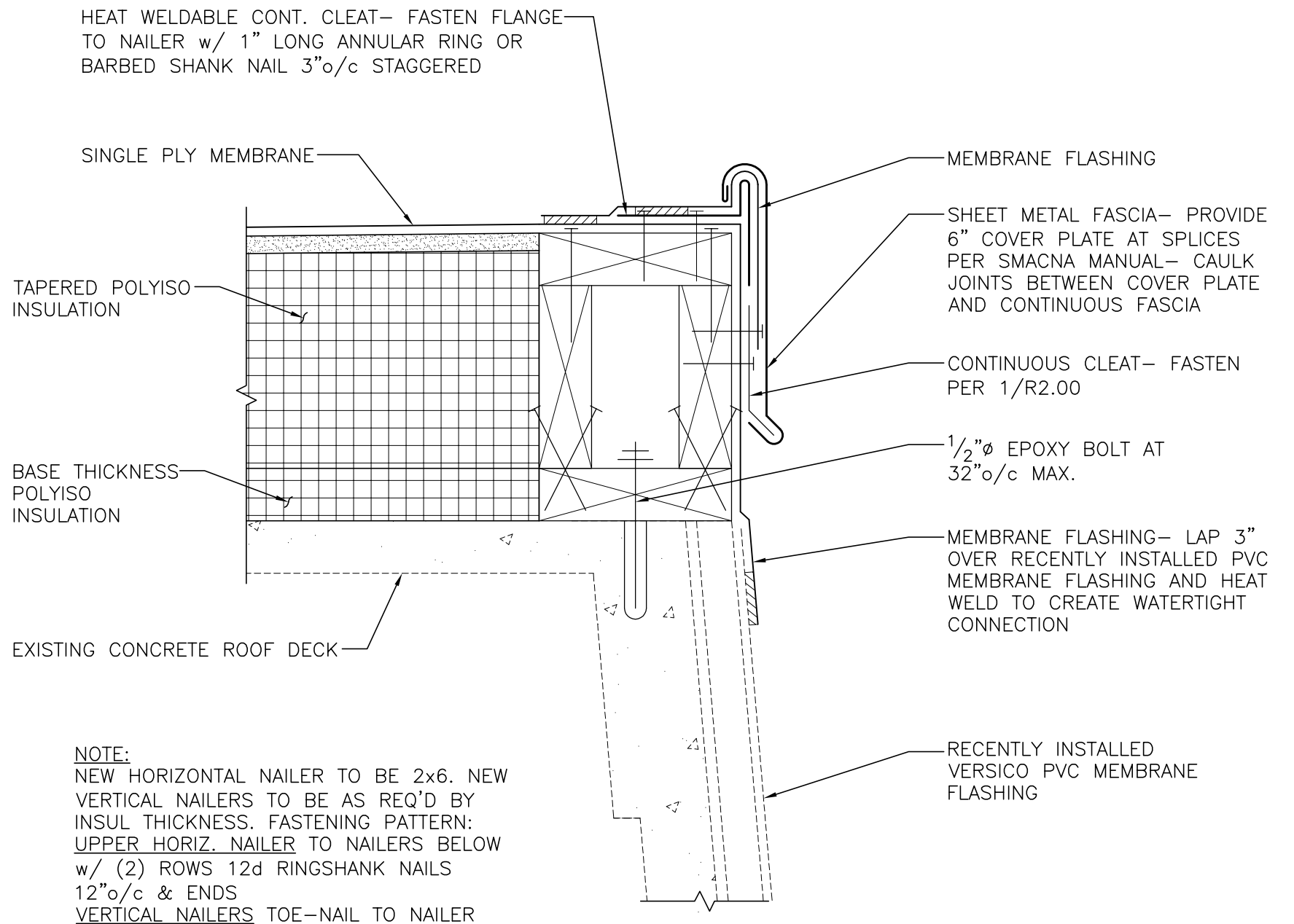


- NEW VENT THRU ROOF
- NEW PRIMARY & SECONDARY
ROOF DRAINS w/ SUMP
- NEW PRIMARY ROOF DRAIN
w/ SUMP AND STANDPIPE
STYLE SECONDARY DRAIN
- ROOF HATCH
- NEW WALKWAY PAD
- SLOPE
- TAIL AT
HIGH END
- HEAD AT
LOW END

LEGEND 6
1/8" = 1'-0" R1.01



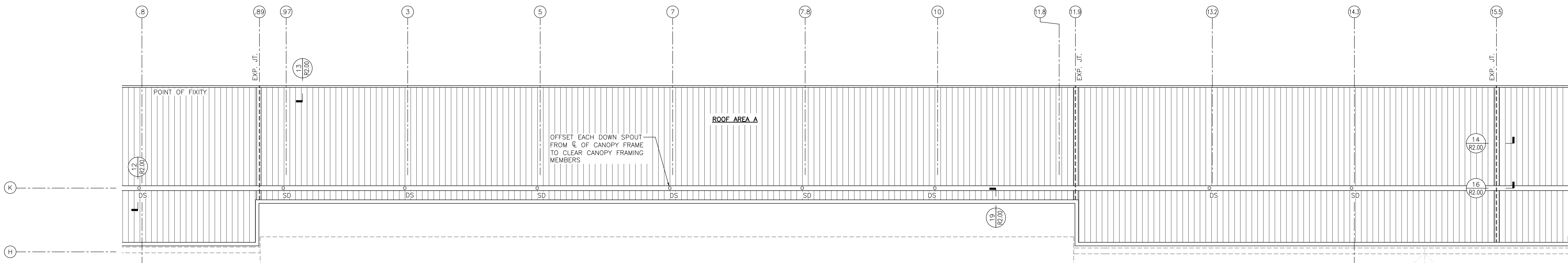
SECTION AT ROOF EDGE 5
3" = 1'-0" R1.01



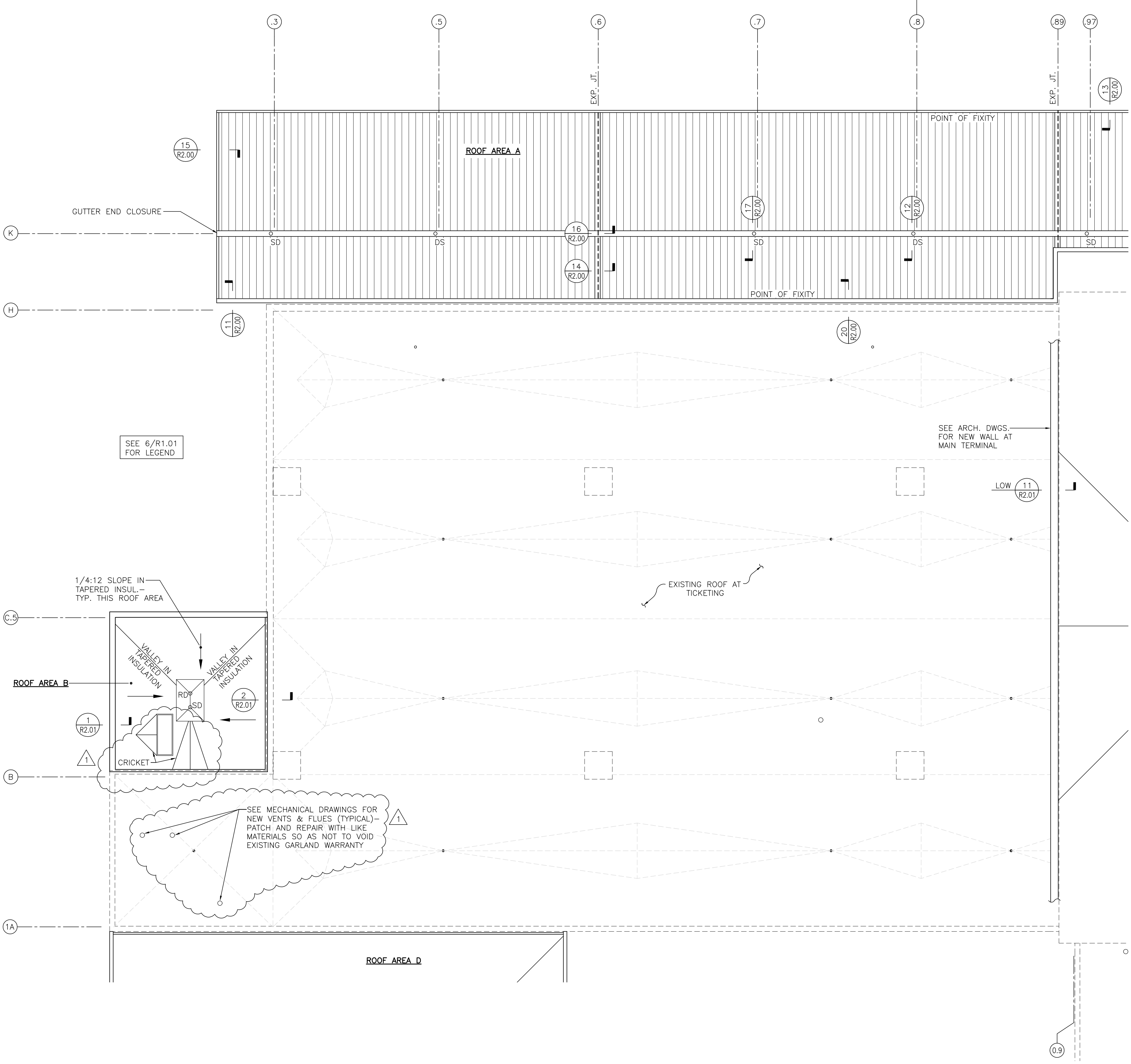
SECTION AT ROOF EDGE 4
3" = 1'-0" R1.01

NOTE:
NEW HORIZONTAL NAILER TO BE 2x6. NEW
VERTICAL NAILERS TO BE AS REQ'D BY
INSUL. THICKNESS. FASTENING PATTERN:
UPPER HORIZ. NAILER TO NAILERS BELOW
w/ (2) ROWS 12d RINGSHANK NAILS
12" o/c & ENDS
VERTICAL NAILERS TOE-NAIL TO NAILER
BELOW IN TWO DIRECTIONS w/ 12d NAILS
8" o/c & ENDS.

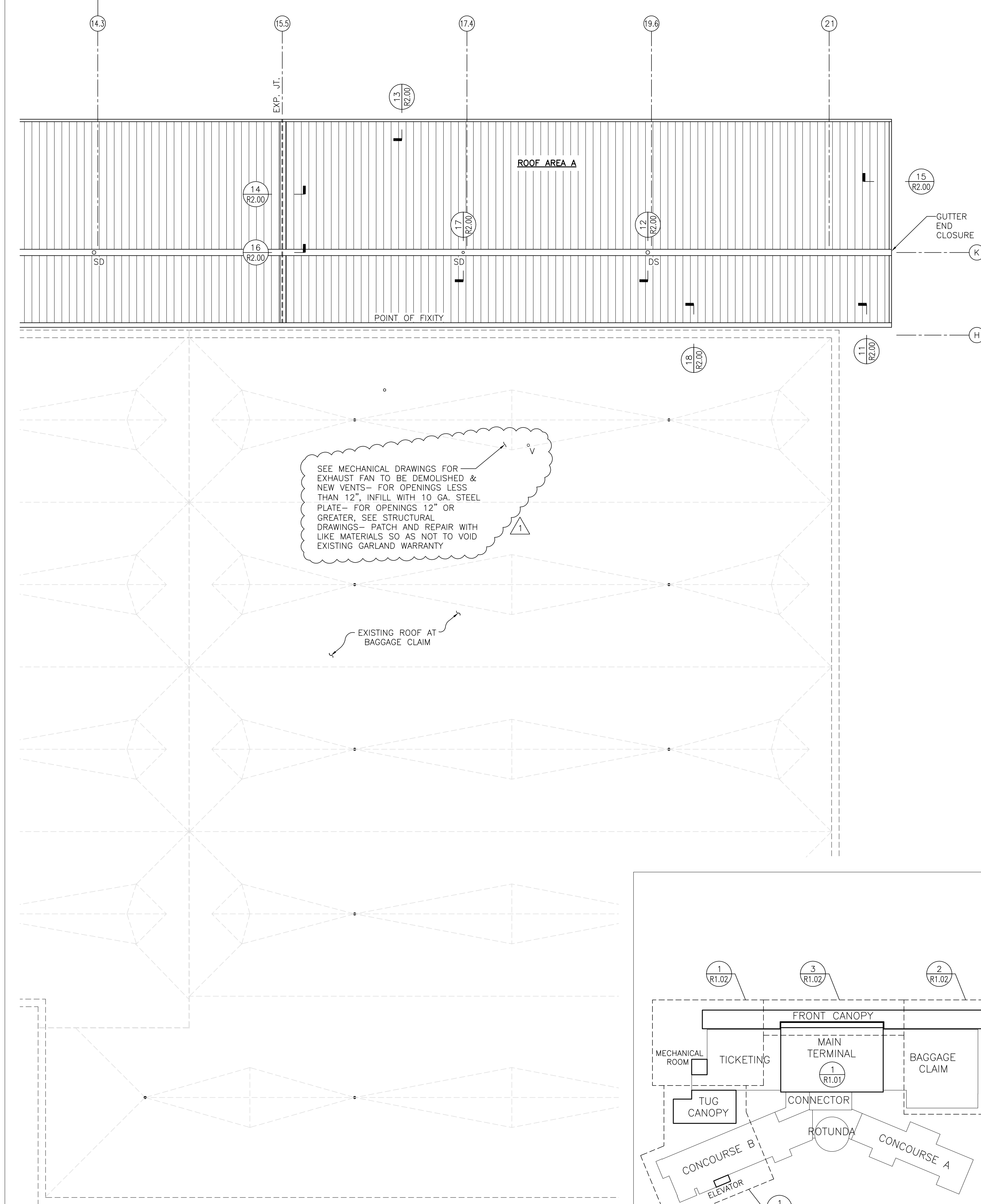
NOTE:
SEE 4/R1.01 FOR
INFORMATION NOT
SHOWN.



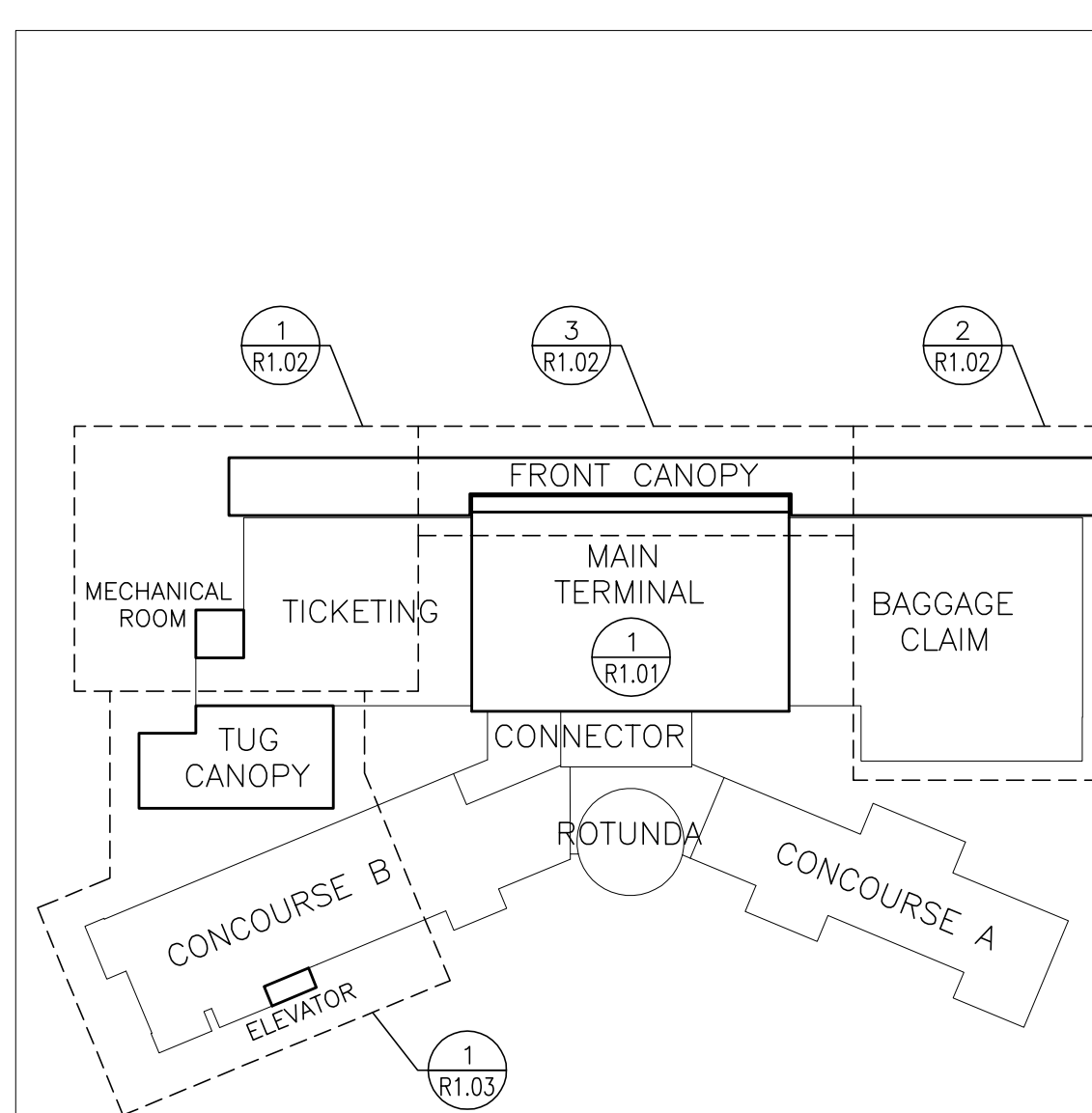
ROOF PLAN — FRONT CANOPY 3
1/8" = 1'-0" R1.02



ROOF PLAN — TICKETING 1
1/8" = 1'-0" R2.02



ROOF PLAN — BAGGAGE CLAIM 2
1/8" = 1'-0" R1.02



KEY PLAN
NO SCALE

**GORDON
JOHNSON**
Architecture

454 May Street, Suite 4
Fayetteville, NC 28301
Phone: (910) 223-2800
Fax: (910) 223-2801
gordonjohnsonarchitecture.com
© Copyright 2014
Gordon E. Johnson, AIA
Reproduction or publication of this
document is not permitted without the
expressed consent of the author.

Legal Disclaimer:
This document is intended to comply with
the requirements of the American Institute of
Architects (AIA) and the International
Council of Building Officials (ICBO). It is
not intended to be used as a contract or
any other legal document. The user should
consult with their attorney for advice on
the proper use of this document.

**FLEMING
& ASSOCIATES, P.A.**

1004 HWY 67, SUITE 200
FAYETTEVILLE, NC 28306
TEL: 910-433-2825
FAX: 910-433-2824
www.flemingandassociates.com

NC
PROFESSIONAL
SEAL
11278
STEPHEN FLEMING

10/22/19

Fayetteville Regional Airport - Airline Terminal Improvements Part 2

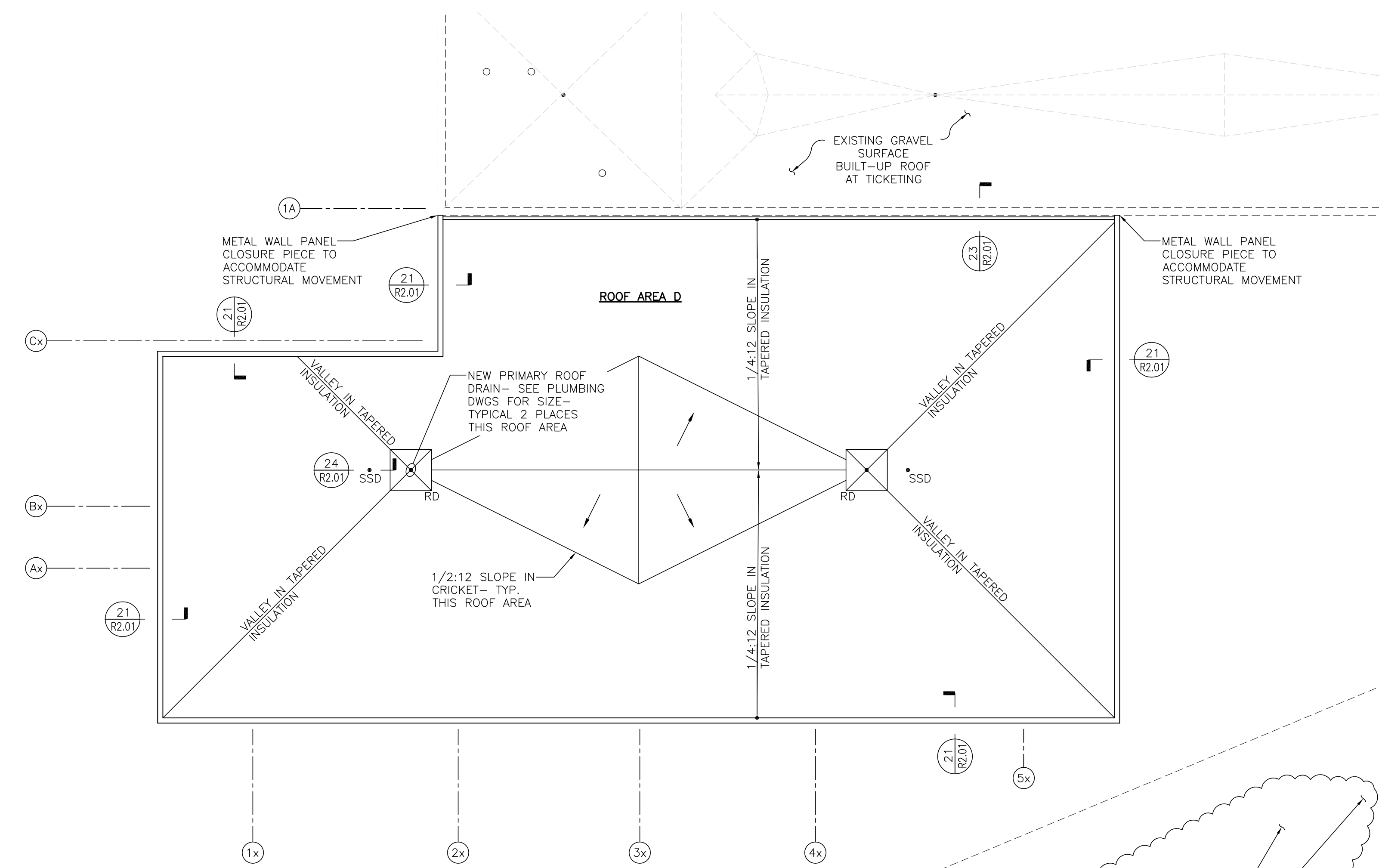
ROOF PLANS - TICKETING, BAGGAGE CLAIM,
AND FRONT CANOPY

400 Airport Road
Fayetteville, North Carolina 28306

DRAWN BY: BHT
REVIEWED BY: SF
DATE: 1-22-19
PROJECT NO.: 1515

REVISIONS
1-22-19 ADDENDUM #1
1-22-19
1-22-19

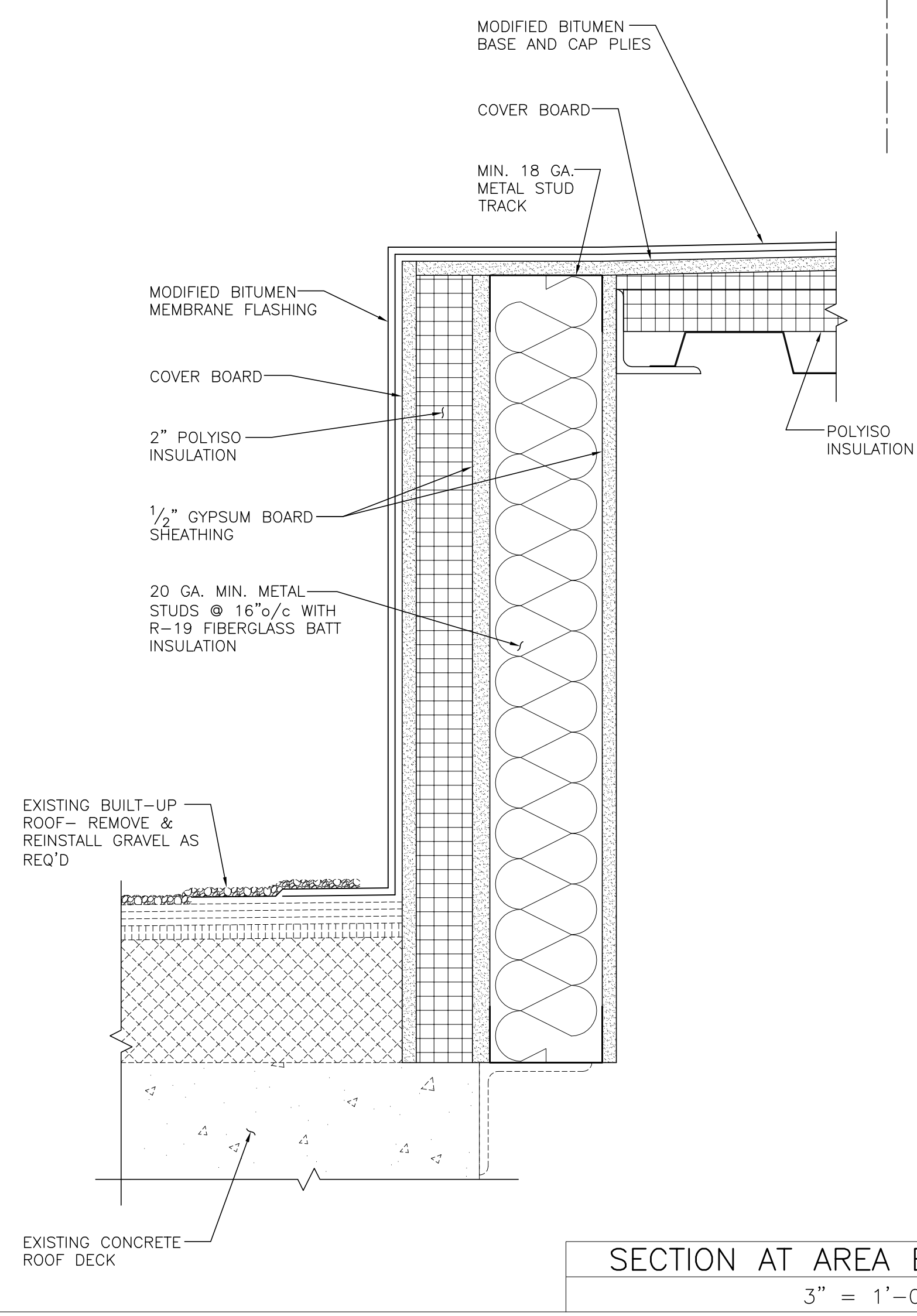
SHEET NUMBER
R1.02



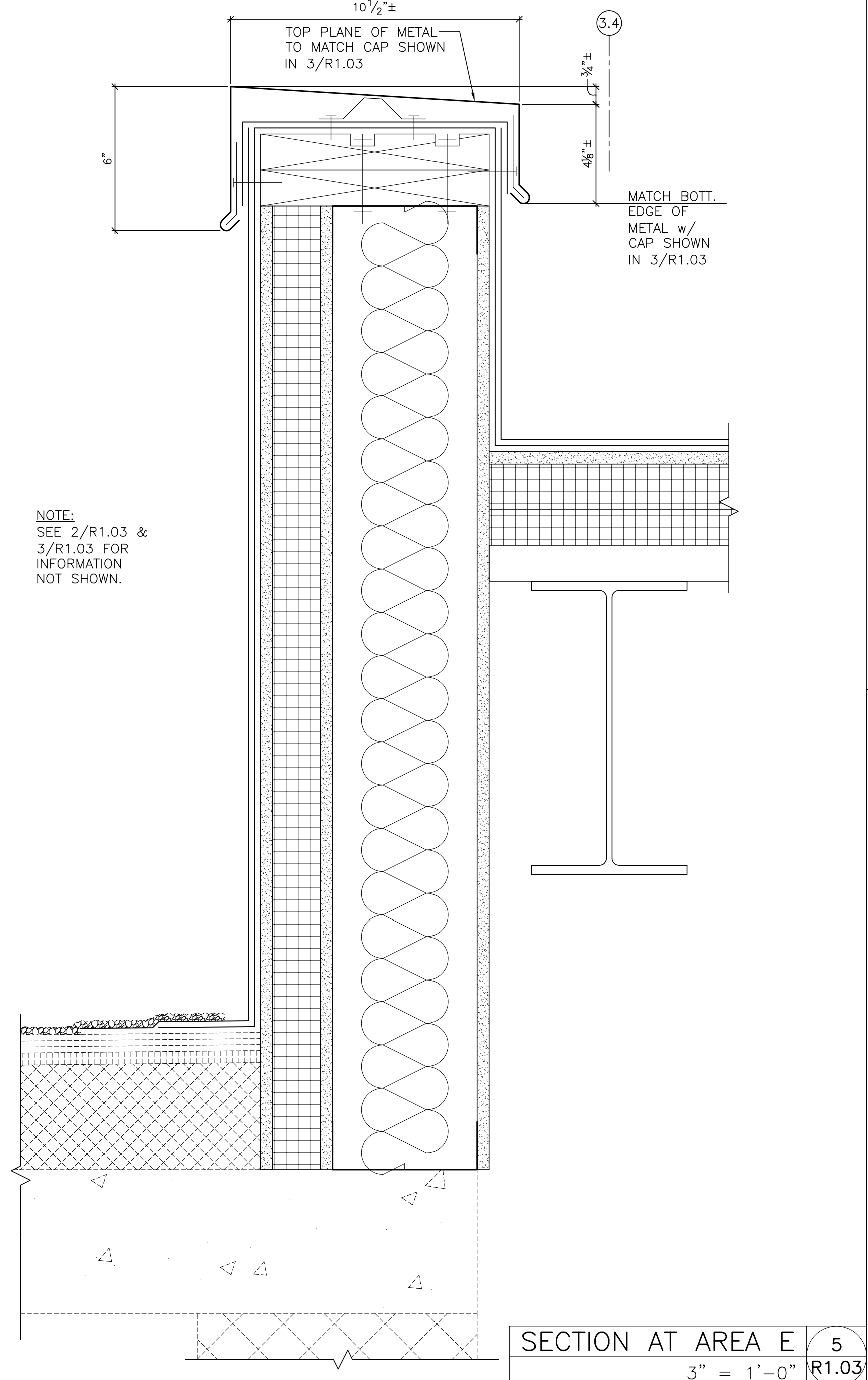
NOTES:
1. SEE 6/R1.01 FOR LEGEND.
2. SEE 26/R2.01 FOR METAL WALL PANEL NOTES AT AREA D.

SEE MECHANICAL DRAWINGS FOR EXHAUST FANS TO BE DEMOLISHED— FOR OPENINGS LESS THAN 12". INFILL WITH 10 GA. STEEL PLATE— FOR OPENINGS 12" OR GREATER. SEE STRUCTURAL DRAWINGS— PATCH AND REPAIR WITH LIKE MATERIALS

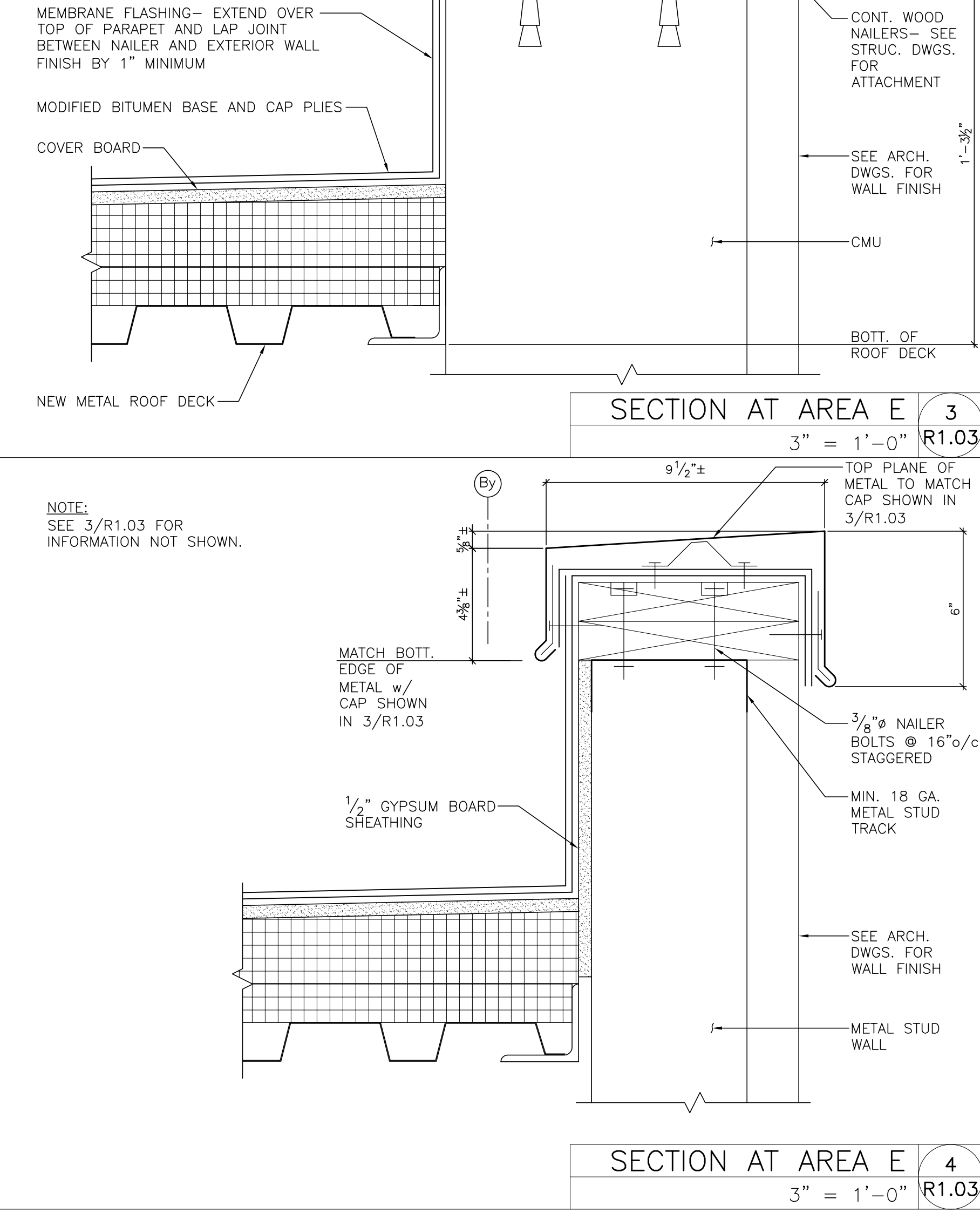
ROOF PLAN — TUG CANOPY AND CONCOURSE B 1
1/8" = 1'-0" R1.03



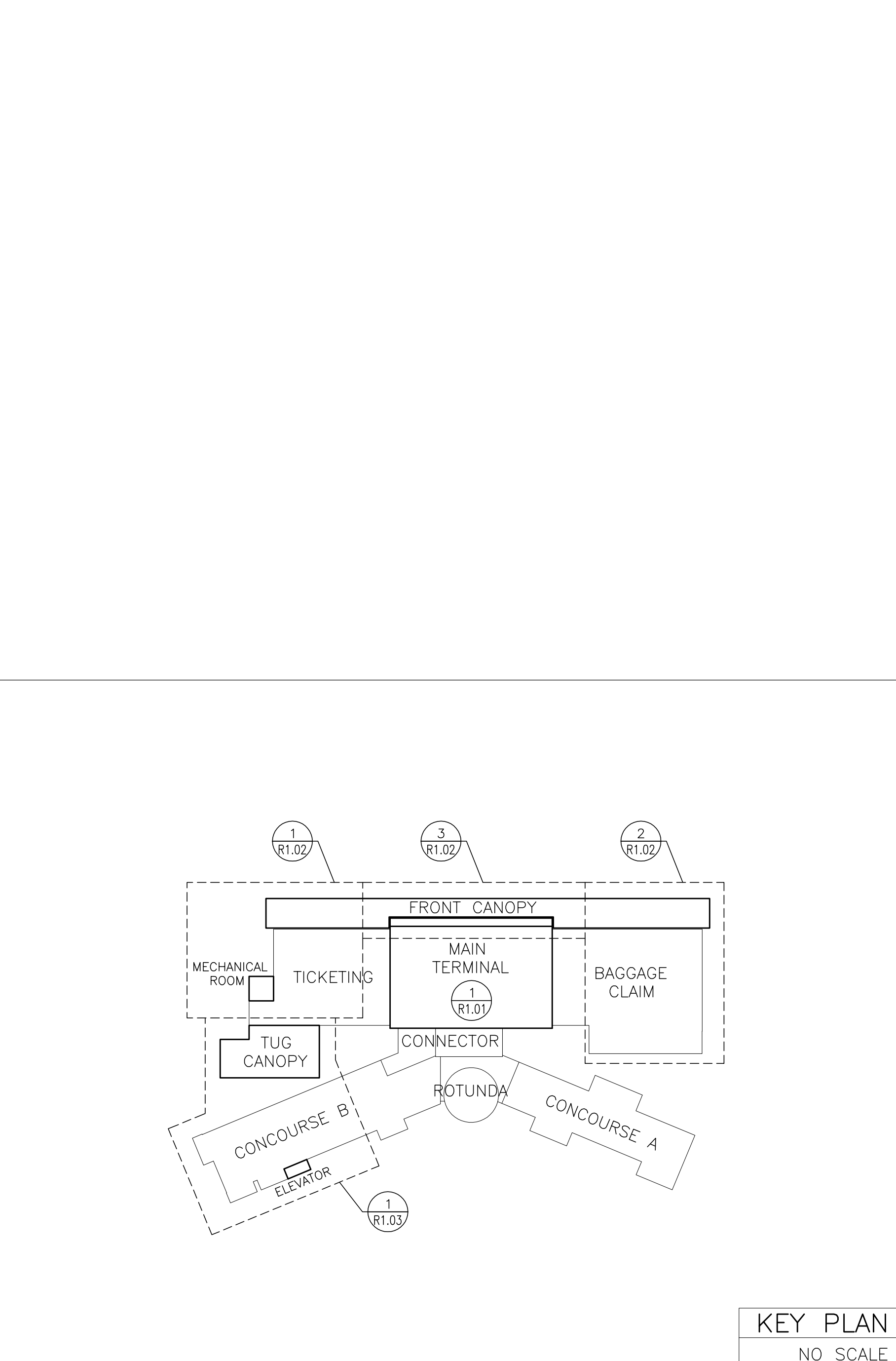
SECTION AT AREA E 2
3" = 1'-0" R1.03



SECTION AT AREA E 5
3" = 1'-0" R1.03



SECTION AT AREA E 4
3" = 1'-0" R1.03



KEY PLAN
NO SCALE

GORDON JOHNSON
Architecture
454 May Street, Suite 4
Fayetteville, NC 28304
Phone: (910) 225-2804
Fax: (910) 225-2804
gordonjohnsonarchitecture.com
© Copyright 2014
Gordon E. Johnson, AIA
Reproduction or publication of this document is not permitted without the expressed consent of the author.

Legal Disclaimer:
This document is intended to comply with the requirements of the American Institute of Architects Act of 1901, as amended, and the Architects Act of 1961, as amended. It is not intended to be a contract and does not constitute an offer of insurance or any other financial product. It is intended to be used in conjunction with the policy and terms of the contract.

FLEMING & ASSOCIATES, P.A.
FF
1000 HWY 101, SUITE 200
FAYETTEVILLE, NC 28306
TEL: 910-433-2805
FAX: 910-433-2804
www.flemingandassociates.com

Professional Seal
NORTH CAROLINA
EXPIRATION DATE: 12/31/19
SEAL NO. 11278
STEPHEN FLEMING

Fayetteville Regional Airport - Airline Terminal Improvements Part 2

ROOF PLAN - TUG CANOPY AND CONCOURSE B;
SECTIONS AND NOTES

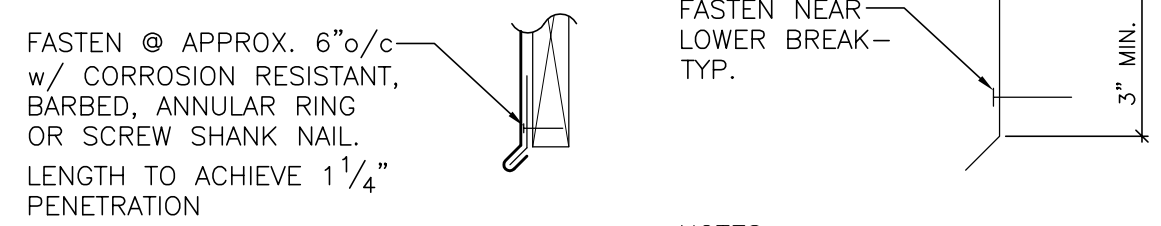
400 Airport Road
Fayetteville, North Carolina 28306

DRAWN BY: DBT
REVIEWED BY: GF
DATE: 1-22-14
PROJECT NO.: 1515

REVISIONS	
1	7-29-14 ADDENDUM #1
2	
3	

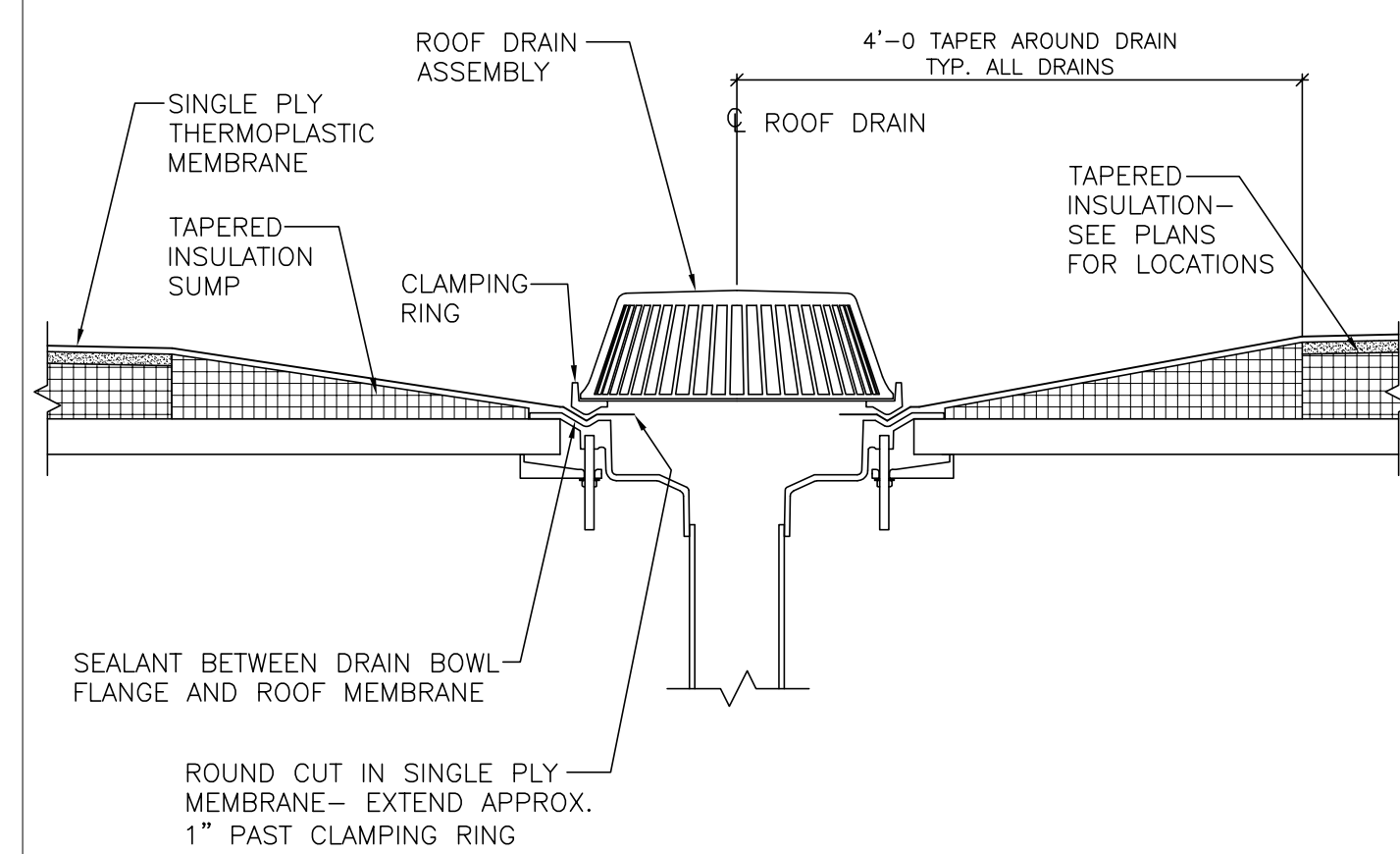
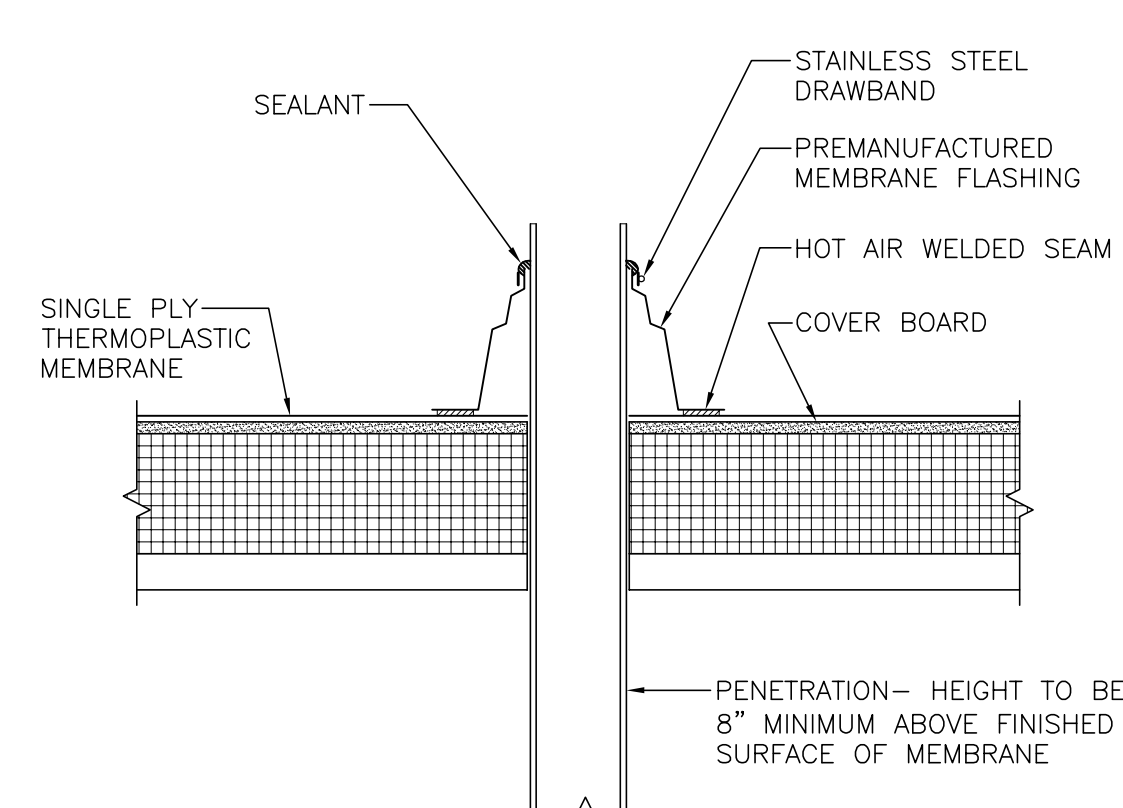
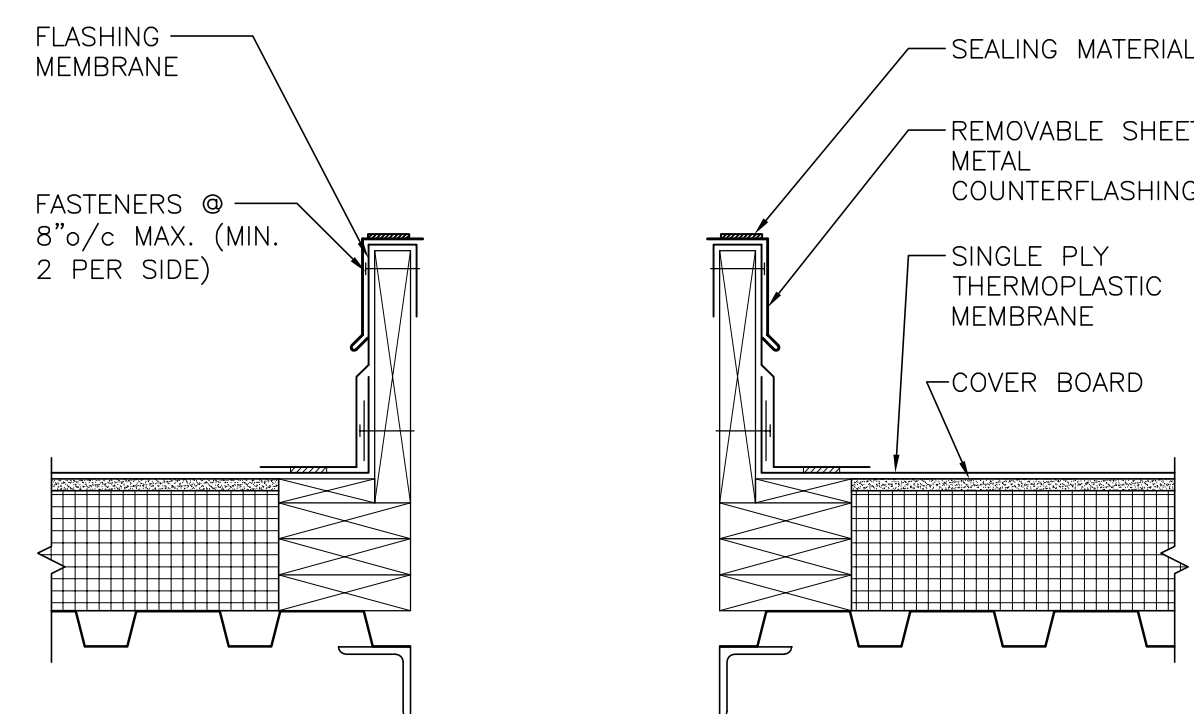
SHEET NUMBER

R1.03

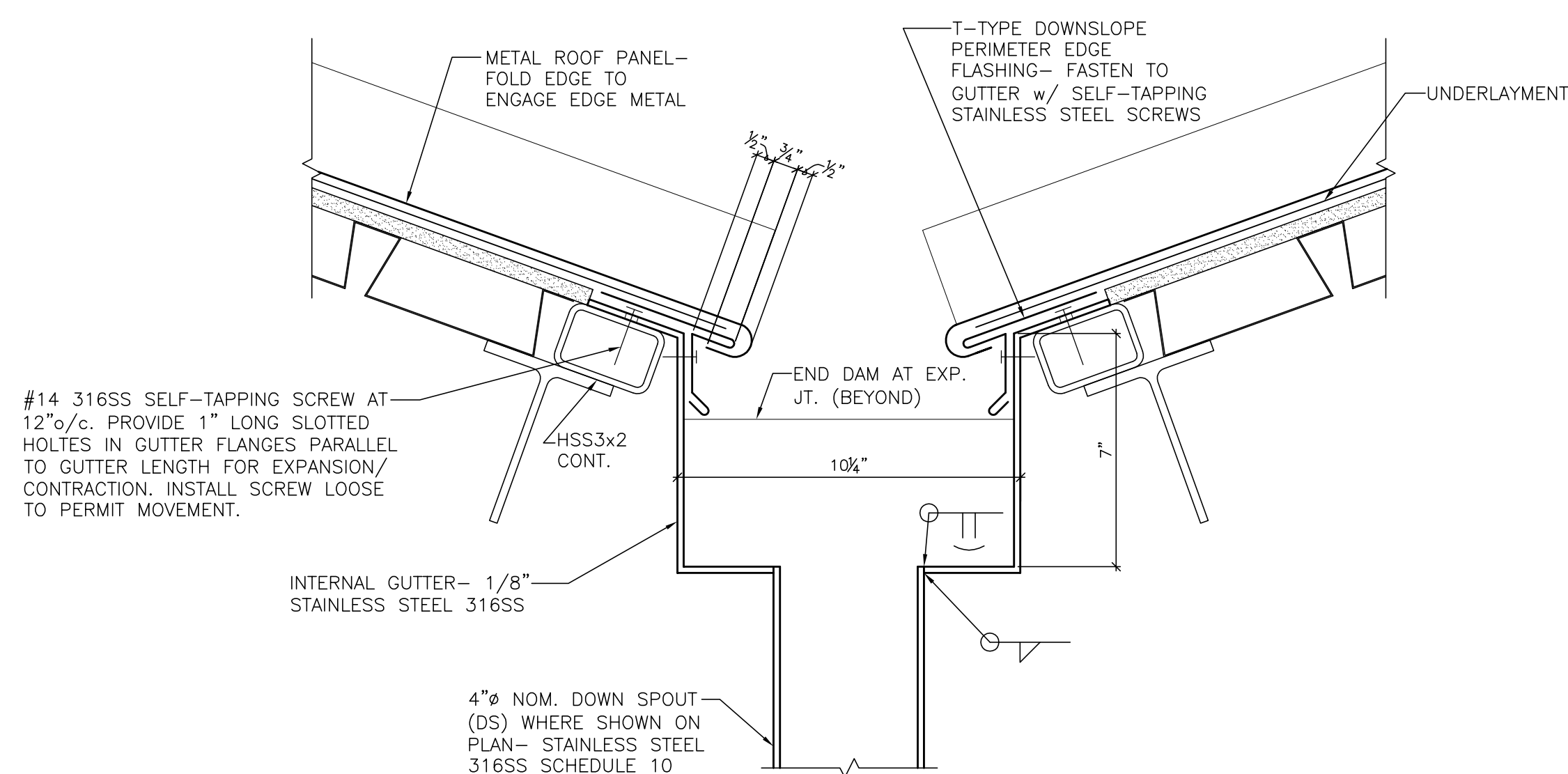


NOTES:

1. STAGGER 1/4" JOINTS IN CLEAT w/ JOINTS IN CONTINUOUS EDGE METAL.
2. CLEAT TO BE ONE GAUGE HEAVIER THAN EDGE METAL



TYPICAL SECTION AT INTERNAL ROOF DRAIN (SIMILAR AT SECONDARY ROOF DRAIN)	NTS	5 R2.00
---	-----	------------



FASTEN TO ROOF DECK TO PROVIDE POINT OF FIXITY AT RIDGE

TURN PANEL PANS UP AT RIDGE TO PROVIDE SECONDARY CLOSURE AND SEAL VERTICAL LEGS

SHEET METAL CAP— PROVIDE 6" WIDE COVER PLATE AT JOINTS— CAULK JOINTS BETWEEN COVER PLATE AND CONT. CAP

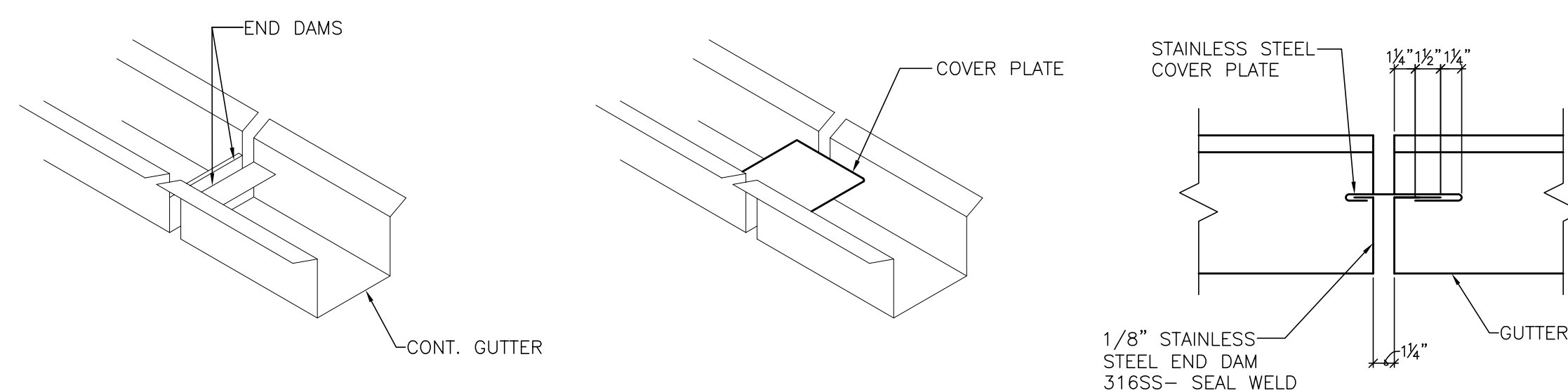
Z-CLOSURE SET IN SEALANT TAPE AND FASTENED— DO NOT SEAL VERTICAL LEGS

6"

60°

CONT. CLEAT— SEE 1/2 R2.00

SECTION AT AREA A	14
3" = 1'-0"	R2.00



NOTES:

1. LOCATE EXPANSION JOINTS (EXP. JT.) AS SHOWN ON PLAN.
2. PROVIDE FULL SIZE GEJ MOCK-UP TO ROOF DESIGNER FOR APPROVAL PRIOR TO FABRICATION.

12" LONG RAIN DEFLECTOR
CENTERED ON SD

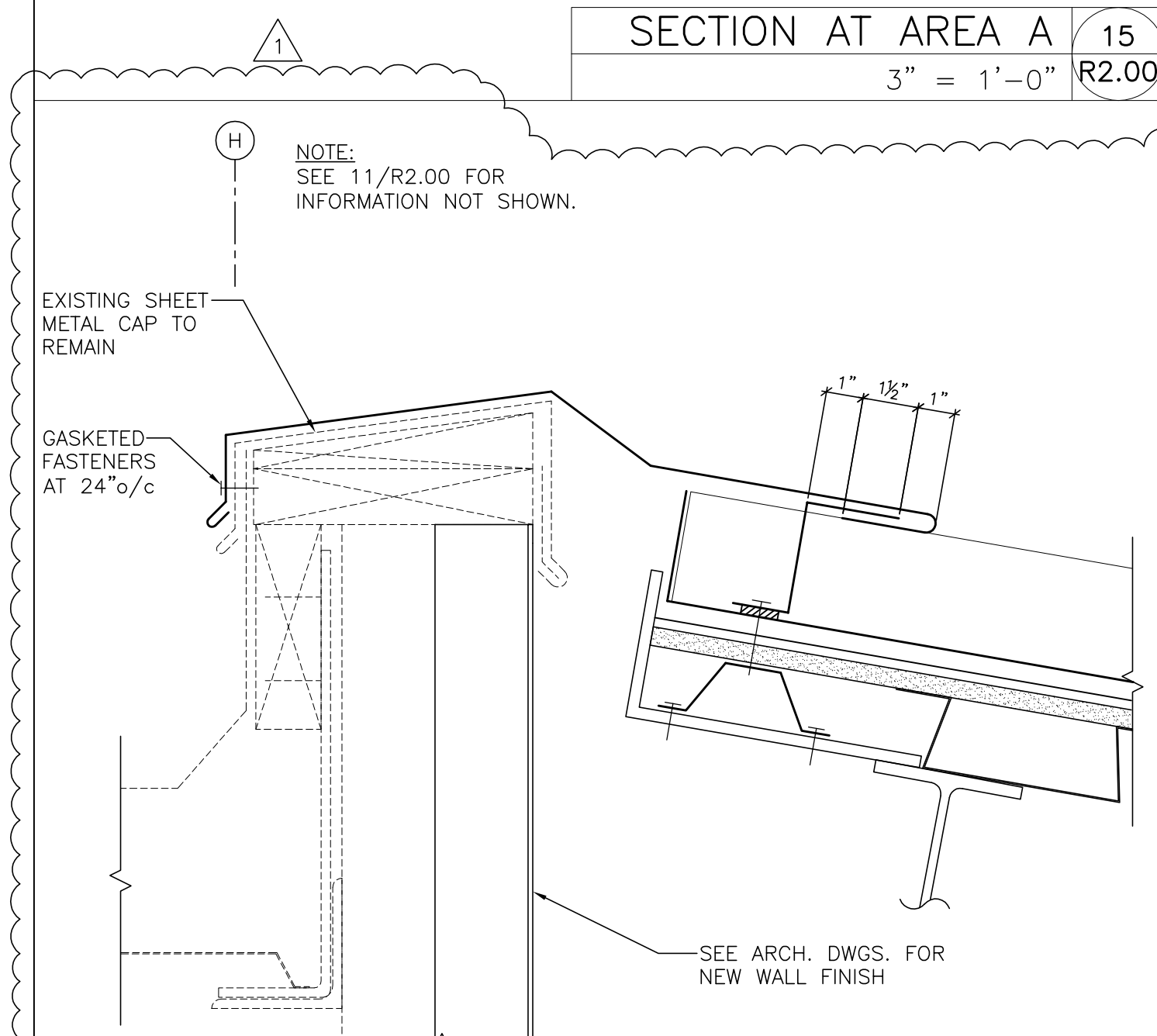
4" NOM. SECONDARY
DRAINAGE (SD) DOWN
SPOUT WHERE SHOWN ON
PLAN— STAINLESS STEEL
316SS, SCHEDULE 10

3"

1/8"

1/8"

SECTION AT AREA A	17
3" = 1'-0"	R2.00



SEE ARCH. DWGS. FOR WALL FINISHES

STAINLESS STEEL COUNTER FLASHING RECEIVER - INSTALL PRIOR TO WALL FINISHES - LAP SPICES 6" MIN. & APPLY 2 BEADS SEALANT

NOTE:
SEE 11/R2.00
FOR INFORMATION
NOT SHOWN.

1" 1/2" 1"

NOTE:
SEE 11/R2.00 FOR
INFORMATION NOT SHOWN.

EXISTING SHEET
METAL TO
REMAIN

GASKETED
FASTENERS
AT 24" o/c

1" 1 1/2" 1"

The drawing shows a side elevation of a bench seat assembly. The seat back is tilted and supported by a metal frame. A detail view shows the connection between the seat back and the frame, with dimensions 1", 1 1/2", and 1" indicating the spacing of the gasketed fasteners. The existing sheet metal to remain is shown as a dashed line.

SECTION AT AREA A	20
3" = 1'-0"	R2.00

